

A WHOLE NEW WORLD OF CUSTOM BAIT OPTIONS

Providing equipment for anglers to make their own soft plastic baits is one of the most exciting developments at Do-it. Whether you are hand pouring into an open mold or injecting into our more sophisticated multi-piece molds, you will be pleased with the quality of your finished bait. We hold ourselves to a higher standard and it will show when you take this bait to the water. Our baits are uniquely designed, carefully scrutinized and tested by Elite Series Tournament Anglers.

With our commitment to provide the best products available, we have designed our own plastic formulas, colorants and additives. These products are custom designed to our standards, and serious fishermen across the globe are turning to Do-it for their soft bait needs.

We encourage you to venture into this area of tackle building. There are many similarities but some critical differences between casting a metal lure and a plastic bait. We encourage you to utilize our resources on this at our website and forum to build your knowledge and comfort level with injecting soft plastics. If you like our classic products you will love our new soft bait products.



Visit: www.do-itmolds.com
to learn more about soft baits

SAMPLE SOFT BAIT

Fish our baits before you buy the mold. You choose any 5 baits you would like included in the sample bag. Most samples are shot in regular formula plastisol with the first available color.

Item No.	Price
91394	4.99



SOFT BAIT MOLDS

Do-it's Soft Bait molds are CNC machined molds cut from bar stock aluminum. We have been making molds for fishing tackle for 55 years. We built our reputation on making the finest quality molding equipment in the industry. Research and development play a critical role in providing our customers with unique and effective baits. Each design goes through a rigorous process involving multiple iterations and testing. Long before you can order one of our molds, they have been fished and approved by our Pro-Staff of elite tournament anglers. Rest assured, if you purchase a Do-it Soft Baits Mold, you have the best the industry can offer.



BIRCH BUG

This bait is the perfect size for pitching and flipping or if you want to super charge a jig! The Birch Bug has a beaver or bug shaped body, claws and long tentacles. The ribbed body provides a slow fall.

Item No.	Model No.	Mold Type	Size (in inches)	Cavities	Price
95065	BIR4R01	Craw	3.75	1	64.50
95066	BIR4R02	Craw	3.75	2	119.50
95067	BIR45R01	Craw	4.25	1	84.50
95068	BIR45R02	Craw	4.25	2	164.50



BIRCH BUG PRO-SERIES

Item No.	Model No.	Mold Type	Size (in inches)	Cavities	Price
95246	BIR45R06	Craw	4.25	6	499.99

BUCKY BUG

Similar to the Birch bug, but with a solid body.

Item No.	Model No.	Mold Type	Size (in inches)	Cavities	Price
95069	BUK4001	Craw	3.75	1	54.50
95070	BUK4002	Craw	3.75	2	94.50
95071	BUK4501	Craw	4.25	1	57.50
95072	BUK4502	Craw	4.25	2	99.50



CANEY CREEK CRAW

The Caney Creek Craw is an excellent injection mold that has a perfect craw profile from all directions. The subtle action of the claws make it especially productive during cold weather or when fish are a little spooky. The action of this bait is very realistic and is quite different than the "action" style of the Mad Dad craw.

Item No.	Model No.	Mold Type	Size (in inches)	Cavities	Price
95073	CCC0001	Craw	3.75	1	49.50
95074	CCC4001	Craw	4	1	57.50

Create multi-color craws using the claw mold.



CRAW CLAWS

The claws are spread apart slightly more and a little more "cup" has been added to the under side. Spice up your craws by adding a little color! (2 complete sets of claws)

Item No.	Model No.	Mold Type	Size (in inches)	Cavities	Price
95023	CCCC003	Claw	3.75	3	59.50
95024	CCC4C02	Claw	4	2	62.50

CHERRY PICKER

The Cherry Picker is a realistic creature craw with a ton of action on the fall or setting still. Combining a very realistic appearance in the water, the bug body really slows down the fall while kicking up some dust while hopping it on the bottom. This bait is very productive on the fall, hopping it and swimming it. Best of all is that it works hard for you even when dead stuck.

Item No.	Model No.	Mold Type	Size (in inches)	Cavities	Price
95082	CP40001	Craw	4	1	74.50

CHERRY PICKER CLAW

This is a 2 cavity (2 complete sets of claws and tentacles) for the Cherry Picker. This mold can also be used to make a jig trailer. The body is pretty simple, but it would put the claws and tentacles on a jig and provide a smaller profile with the same action as the Cherry Picker.

Item No.	Model No.	Mold Type	Size (in inches)	Cavities	Price
95013	CPC4002	Claw	4	2	49.50



MUD BUG

The Mud Bug is a combination “Action” and “Profile” Craw. Combining a very realistic appearance in the water with thickened textured pinchers, and bevels, that cause the claws to shoot out with the slightest pop or slowest retrieve. The movement emulates a natural active, but not overbearing or unrealistic action. Measuring 3.75” the Mud Bug is the perfect size for a numbers bait, or you can bulk it up for a kicker by adding it to a jig. This mold is very easy to inject.

Item No.	Model No.	Mold Type	Size (in inches)	Cavities	Price
95064	MB37501	Craw	3.75	1	54.50
95243	MB37506	Craw	3.75	6	325.00



Mud Bug

MUD BUG TRAILER

Item No.	Model No.	Mold Type	Size (in inches)	Cavities	Price
95063	MBC2502	Craw	2.5	2	89.99



Mud Bug Trailer

MUD BUG CLAWS

Item No.	Model No.	Mold Type	Size (in inches)	Cavities	Price
95036	MB375C4	Claw	3.75	4	54.50

MUD BUG CLAW TIPS

This is a 8 cavity (4 complete sets of claw tips) for the 3.75” Mud Bug. This mold makes perfect tips for your Mud Bugs. They are very easy to make, remove, and place in the Mud Bug mold.

Item No.	Model No.	Mold Type	Size (in inches)	Cavities	Price
95012	MB375T8	Tips	3.75	8	69.50

BERRY BUG

The Berry Bug will be one of the most versatile baits you own. With a bug body, hog flappers, and twin c-tails, you can use it as a jig trailer, chatter bait trailer, scrounger trailer, pitch it, flip it, swim it, c-rig it, t-rig it, just about anything you can think of with it. The tails are super active on the fall or retrieve and agitate independent of one another. The flappers displace a lot of water. Even the body has a unique “V” texture that works against the water while retrieving it. If you rig it on its side it has the perfect profile of a small bait fish. Your imagination is the only limitation you will have with this bait.

Item No.	Model No.	Mold Type	Size (in inches)	Cavities	Price
95085	BBU3501	Creature	3.5	1	57.50
95086	BBU4501	Creature	4.5	1	59.50
95087	BBU4502	Creature	4.5	2	99.50



BOSS HOG

This bait is great for flipping or you can cut it down and use it as a super trailer. It has large flappers to get their attention and twin C-tails to lure them in. What really sets this bait apart is the ringed body, adding one more water displacing attractor to an already deadly bait.

Item No.	Model No.	Mold Type	Size (in inches)	Cavities	Price
95088	HOG4501	Creature	4.5	1	54.50
95089	HOG5251	Creature	5.25	1	57.50



BOSS HOG OPEN POUR

Note: This open pour mold requires advanced skills to effectively pour as it has thin appendages. If you are new to open pours the Mad Dad 4” OP Craw is much easier to learn with.

Item No.	Model No.	Mold Type	Size (in inches)	Cavities	Price
95127	HOG450P	Hand Pour Creature	4.5	1	22.50

MAD DAD CRAW

The Mad Dad Craw is an “action” craw. It provides a realistic profile when pitching, however, the claws flap like crazy on retrieve. If you’re a fan of active craws, you will love the action this bait provides. The 3” version is the perfect size for a jig trailer or smaller fish. Pincher molds for multi-color craws are also available.

Item No.	Model No.	Mold Type	Size (in inches)	Cavities	Price
95075	MD30001	Craw	3	1	47.50
95077	MD3XL01	Craw	3.5	1	49.50
95078	MD40001	Craw	4	1	54.75
95079	MD50001	Craw	5	1	59.50

MAD DAD 3XL PRO-SERIES

Item No.	Model No.	Mold Type	Size (in inches)	Cavities	Price
95250	MD3XL06	Craw	3.5	6	285.00

MAD DAD CLAWS

Make multi-colored craws with this 4 cavity pincher mold for the Mad Dad.
4 Cavities (2 Pairs of claws)

Item No.	Model No.	Mold Type	Size (in inches)	Cavities	Price
95031	MD3C002	Claw	3/3.5	4	49.50
95032	MD4C002	Claw	4	4	54.95
95033	MD5C002	Claw	5	4	59.95

MAD DAD LAMI PLATE

Item No.	Model No.	Mold Type	Size (in inches)	Cavities	Price
95173	L3XL01	Lami Plate	3.5	1	14.99
95264	LMD4001	Lami Plate	4	1	14.99



Create multi-color craws using the claw mold.

MAD DAD 5 XC

The MD5 XC (Extra Claw) was specifically designed to create extra disruption without increasing the profile of the bait. We created a body similar in size to a 4” craw, but over sized the claws making the profile 4”, while the actual bait is 5”.

Item No.	Model No.	Mold Type	Size (in inches)	Cavities	Price
95080	MD5XC01	Craw	5	1	57.50

MAD DAD 5 XC CLAWS

Make multi-colored craws with this 2 cavity pincher mold for the Mad Dad 5XC. The Mad Dad Craw is an “action” craw. It provides a realistic profile when pitching, however, the claws flap like crazy on retrieve. If you’re a fan of active craws, you will love the action this bait provides.

Item No.	Model No.	Mold Type	Size (in inches)	Cavities	Price
95034	MD5XC02	Claw	4	2	59.95



MAD DAD CRAW CHUNK

The Mad Dad Craw Chunk is an “action” trailer. It provides a realistic profile when pitching, however, the claws flap like crazy in a tight realistic pattern on retrieve. When sitting on the bottom it stands up in a defensive motion and the claws slowly move like a real craw.

Item No.	Model No.	Mold Type	Size (in inches)	Cavities	Price
95081	MDCC001	Craw	3	1	44.95



Mad Dad Craw Chunk is an “action” trailer.

MAD DAD 3 SUPER CHUNK

The Mad Dad 3 Super Chunk is a spin on the original Mad Dad 3. The claws are wider providing more surface area, creating a greater flap and water displacement. We also made them thinner and removed the rib closest to the body to increase the movement of the entire claw. Both the MD3 and the MD3 Super Chunk work great as trailers or by themselves.

Item No.	Model No.	Mold Type	Size (in inches)	Cavities	Price
95076	MD3SC01	Craw	3	1	47.50

MD3 SUPER CHUNK CLAWS

Item No.	Model No.	Mold Type	Size (in inches)	Cavities	Price
95035	MB3SCC4	Claw	3	4	49.50



MAD DAD OPEN POUR

Very easy to pour. Using an open pour is a great way to do custom work, finish off that last little bit of plastic left in your cup, test new colors, or introduce someone new to pouring their own baits.

Item No.	Model No.	Mold Type	Size (in inches)	Cavities	Price
95129	MD3XLOP	Hand Pour Craw	3.5	1	20.50
95131	MD4000P	Hand Pour Craw	4	1	22.50
95132	MD5000P	Hand Pour Craw	5	1	29.50

MAD DAD 3 SUPER CHUNK OPEN POUR

Very easy to pour, the Mad Dad Craw is an “action” craw. It provides a realistic profile when pitching, however, the claws flap like crazy on retrieve. If you’re a fan of active claws, you will love the action this bait provides. The MD3 SC (Super Chunk) was specifically designed as a jig trailer and has even more claw action than the regular Mad Dad.

Item No.	Model No.	Mold Type	Size (in inches)	Cavities	Price
95128	MD3SCOP	Hand Pour Craw	3	1	19.50



MAD DAD 5 XC OPEN POUR

Very easy to pour, the Mad Dad Craw is an “action” craw.

Item No.	Model No.	Mold Type	Size (in inches)	Cavities	Price
95130	MD5XCOP	Hand Pour Craw	5	1	24.00



DD GILL

The DD Gill (Dying Dinner Gill) is 1" wide at it's widest, .4" thick and has a textured splittable paper thin tail. They eyes are recessed to allow them to be glued or dipped. The small fins flutter on the fall and retrieve. This is a perfect bait to throw into cover (reaction bite), let it fall, hop it back to you - pausing - to pick up the lunker that has been following it. This is a very versatile and lifelike imitation of a dying bait fish. Fish it on a swim bait hook, jig or Texas rigged. We recommend using size 5 or 6 eyes on this bait (see page 77).

Item No.	Model No.	Mold Type	Size (in inches)	Cavities	Price
95095	375DDG01	Creature	3.75	1	59.50



FLIPPIN' HOG

The Flippin' Hog measures approximately 4.25" long and a little over 3/4" wide. The bug style body causes it to fall slowly and the big segmented paddle tail puts off a lot of water. The tail segments are split down the middle allowing you to easily split the tail for an even more erratic presentation.

Item No.	Model No.	Mold Type	Size (in inches)	Cavities	Price
95083	FLPH4251	Creature	4.25	1	57.50
95244	FLPH42506	Creature	4.25	6	299.50



FLIPPIN' HOG LAMI PLATE

Plate #95159 will also work with the Flipster.

Item No.	Model No.	Mold Type	Size (in inches)	Cavities	Price
95159	LFLPH4251	Lami Plate	4.25	1	16.25
95160	LFLPH42506	Lami Plate	4.25	6	29.50

FLIPPIN' STICK OPEN POUR

The 6" Flippin' Stick is a 2 cavity mold that produces an incredible flipping bait. The jointed paddle tail flutters on the fall and is even more enticing as it is worked around docks, vegetation, timber or rocks.

Item No.	Model No.	Mold Type	Size (in inches)	Cavities	Price
95126	FS60P02	Hand Pour Creature	6	2	24.50



FLIPPIN' ZIP

The 4" Flippin' Zip body has a unique concave shape that catches water and greatly adds to the erratic action and vibration the bait puts off. Best of all is that it works hard for you even when dead stuck. The bait measures 4" at rest, is 5/8" wide at it's widest, and the ribbing is 1/16".

Item No.	Model No.	Mold Type	Size (in inches)	Cavities	Price
95093	4FZIP002	Creature	4	2	109.50



FLIPSTER

Looking for subtle flipping bait or maybe a jig trailer? Here you are. It has all the goodness of the Flippin' Hog without the extras, just a solid bait with a paddle tail that puts off a lot of water to get some attention. It's a fish catcher plain and simple. The Flippin' Hog Lami plate will work with Flipster also (#95159).

Item No.	Model No.	Mold Type	Size (in inches)	Cavities	Price
95084	FLP42501	Creature	4.25	1	52.50



MAYDAY MAYFLY

The diet of an adult pan fish, especially Bluegill and the rest of the Sunfish family, including Crappie, mainly consists of aquatic insect larvae (mayflies, caddisflies, dragonflies). That is the motivation behind the development of this mold. A mayfly larvae imitation it is, and we've made it in a size that fishes nicely and entices bites.

Item No.	Model No.	Mold Type	Size (in inches)	Cavities	Price
95280	MAY620	Pan Fish	2	6	89.00



MCGRADY "NEWT"

Grady or "Newt" is specifically designed to target pressured waters and river systems for Black Bass and Small Mouth. The McGrady is great for flipping or you can use it as a trailer. It has large flappers to get their attention and an active C-tail to lure them in. What really sets this bait apart is a very low intimidation factor.

Fish notice it, then eat it, end of story. The McGrady is 3" in the mold, 3.5" on the fall or retrieve.

Item No.	Model No.	Mold Type	Size (in inches)	Cavities	Price
95094	BOS351U	Creature	3.5	1	49.50



ZIPPER DROP SHOT WORM

The Zipper Drop Shot Worm "Probie" has a paddle tail and stinger. Overall the worm has a triangular shape so it will always have a flat bottom and angled sides providing great action with little to no rod movement. This is the ultimate in true finesse fishing! Including the length of the stinger this worm measures just under 4". The diameter of the worm is 1/4" at it's widest.

Item No.	Model No.	Mold Type	Size (in inches)	Cavities	Price
95100	DS37504	Drop Shot	3.75	4	79.50



SLIM DADDY

This is a design that was brought to us by a number of different Elite Series Bass anglers. The Slim Daddy's natural crawdad shape and small size mimics those smaller critters that call the grass mats home. It's slender shape allows it to penetrate heavy cover much easier than larger crawfish imitations allowing you to put the bait where the big ones are. Although he is pretty small in stature, rest assured he's just big enough to handle a 4/0 or 5/0 hook without issue.

Item No.	Model No.	Mold Type	Size (in inches)	Cavities	Price
95272	SDC235	Craw	3.5	2	73.50

SLIM DADDY LAMI PLATE

Item No.	Model No.	Mold Type	Size (in inches)	Cavities	Price
95273	SDC235L	Lami Plate	3.5	2	19.50



CARROT/SKINNY CARROT

CARROT

The king of versatility, this list of ways this bait can be rigged is endless. Talk about multi species, if it forages on bait fish it will eat THE CARROT. Tail and Laminate Plates are available to help achieve that perfect bait fish imitation. Consider the Carrot as a go to bait if you just want to catch fish.

Item No.	Model No.	Mold Type	Size (in inches)	Cavities	Price
95002	CAR35010	Carrot	3.5	10	62.50
95003	CAR4004	Carrot	4	4	39.50
95004	CAR4008	Carrot	4	8	69.50
95005	CAR5004	Carrot	5	4	47.50
95006	CAR6004	Carrot	6	4	49.50
95007	CAR7004	Carrot	7	4	54.50



CARROT PRO-SERIES

Item No.	Model No.	Mold Type	Size (in inches)	Cavities	Price
95247	CAR4020	Carrot	4	20	164.50



Carrot

CRAPPIE CARROT

The Crappie Carrot was a collaborative effort with Professional Crappie Fisherman Ted Ellsworth. Specifically designed to target tournament quality Crappie, the Crappie Carrot's size and movement entices fish. Carrot Lami Plates also work for the Crappie Carrot.

Item No.	Model No.	Mold Type	Size (in inches)	Cavities	Price
95049	CAR25T8	Carrot	1.75	12	59.50
95050	CAR30T8	Carrot	2.25	10	54.50
95051	CAR2508	Carrot	2.5	12	64.50
95052	CAR3008	Carrot	3	10	59.50



Crappie Carrot

CRAPPIE CARROT PRO-SERIES

Item No.	Model No.	Mold Type	Size (in inches)	Cavities	Price
95249	CAR3020	Carrot	3	20	115.00

SKINNY CARROT

Just as versatile as the Carrot but it's been put on a diet. It has that same great Carrot shape but more slender. Rig it anyway you see fit its seductive wiggles and shakes will flat out drive the fish crazy.

Item No.	Model No.	Mold Type	Size (in inches)	Cavities	Price
95061	CAR3SC8	Carrot	3	12	64.50
95000	CAR5S04	Carrot	5	4	47.50
95008	CAR6S04	Carrot	6	4	49.50
95001	CAR7S04	Carrot	7	4	54.50

Skinny Carrot
Produced utilizing a lami plate

SKINNY CARROT PRO-SERIES

Item No.	Model No.	Mold Type	Size (in inches)	Cavities	Price
95251	CAR5S020	Carrot	5	20	215.00
95252	CAR6S020	Carrot	6	20	225.00

CARROT/SKINNY CARROT LAMI PLATE

Please verify the size and number of cavities in your mold before purchasing a lami plate.

Item No.	Model No.	Mold Type	Size (in inches)	Cavities	Price
95139	L175CAR	Lami Plate	1.75	12	16.50
95143	L225CAR	Lami Plate	2.25	10	16.99
95145	L25CAR	Lami Plate	2.5	12	17.50
95149	L3CAR	Lami Plate	3	10	17.99
95151	LS3CAR	Lami Plate	3	12	18.50
95152	LCAR351	Lami Plate	3.5	1	19.50
95155	L4CAR4N	Lami Plate	4	4	16.50
95156	L4CAR8N	Lami Plate	4	8	19.50
95165	LCAR504	Lami Plate	5	4	18.99
95164	LCAR5020	Lami Plate	5	20	34.50
95169	LCAR6S1X	Lami Plate	6	4	19.99
95171	LCAR7	Lami Plate	7	4	21.50



CROSS TAIL CARROT

An amazing drop-shop bait. The cross runs the entire length of the tail giving it one flat side that creates a unique action that triggers a strike. This mold can either be injected or hand poured, and will produce a perfect drop-shot bait in either regular or soft plastic. The 3.5" Cross Tail Carrot is .375" wide at it's widest, the body is 1.8" long and the tail is 1.7" long.

Item No.	Model No.	Mold Type	Size (in inches)	Cavities	Price
95096	CTC35010	Carrot	3.5	10	99.50



FINESSE WORM

The name says it all. It's a subtle and delicate worm that coaxes more bites. With a 5/16" diameter it tapers a little more quickly than the Carrots giving it that added wiggle. A perfect bait for drop shot or shaky head presentations it will persuade even the most picky eaters.

Item No.	Model No.	Mold Type	Size (in inches)	Cavities	Price
95213	FNW35010	Carrot	3.5	10	64.50
95214	FNW4004	Carrot	4	4	39.50
95215	FNW4505	Carrot	4.5	5	49.50
95217	FNW6005	Carrot	6	5	62.50



FINESSE LAMI PLATE

Item No.	Model No.	Mold Type	Size (in inches)	Cavities	Price
95283	FWL450	Lami Plate	4.5	5	19.99
95284	FWL4001	Lami Plate	4	4	19.99



Visit: www.do-itmolds.com
for more tips on soft baits

TOAD STICKER

The Toad Sticker has wicked action with almost no weight or the slightest movement. It was specifically designed for pitching and flipping heavy vegetation and timber. It will collapse down and squeeze through the smallest space and then mushroom into frenzy of action.

Item No.	Model No.	Mold Type	Size (in inches)	Cavities	Price
95092	TST6001	Creature	6	1	62.50

TOAD STICKER CLAWS

Item No.	Model No.	Mold Type	Size (in inches)	Cavities	Price
95282	TSC6002	Claw	6	2	39.00

LIL' TOAD STICKER

Item No.	Model No.	Mold Type	Size (in inches)	Cavities	Price
95090	TST4001	Creature	4	1	57.50

TINY TOAD STICKER

Item No.	Model No.	Mold Type	Size (in inches)	Cavities	Price
95091	TST3001	Creature	3	1	54.50



MO MAGIC

There is no doubt that most anyone who has seen or worked with a Carrot mold has thought or commented on its simplistic design and ease of use. Ingenuity however can come from the most interesting places, as a number of us came to realize at this forum's "get together" this past January when one certain member brought with him a Carrot mold that he had modified into one of the most fishable baits any in attendance and seen in a good long while. We would consider it a very versatile bait that will draw any one of a number of species and is made in some sizes that will catch fish. We could not be more pleased and happy for his sharing it with everyone, and at long last, it is now time to release it to the rest of the world... Thank you Mr. Terry



Item No.	Model No.	Mold Type	Size (in inches)	Body Diameter	Cavities	Price
95277	MM1225	Drop Shot	2.5	1/4"	12	47.50
95278	MM1230	Drop Shot	3	5/16"	12	49.50
95279	MM840	Drop Shot	4	7/16"	8	53.00
95288	MM460	Drop Shot	6	1/2"	4	49.50
95289	MM480	Drop Shot	8	1/2"	4	54.50

SUPER STINGER

The 3.75" Super Stinger has a diamond shaped stinger tail that tapers to a fine point. The Super Stinger is .3" tall and just under .5" wide at it's belly. The stinger tail provides an extremely enticing action with no rod movement.



Item No.	Model No.	Mold Type	Size (in inches)	Cavities	Price
95097	SS37505	Drop Shot	3.75	5	59.50
95293	SSL375	Lami Plate	3.75	5	15.99

ZIPPER GOBY

The Zipper Goby body has a unique concave shape that catches water and greatly adds to the erratic action and vibration the bait puts off. The 4" Zipper Goby is just under 4" long and 5/8" wide at it's widest. The ribbing is 1/16".

Item No.	Model No.	Mold Type	Size (in inches)	Cavities	Price
95098	ZGOBI003	Drop Shot	4	3	189.50



CANEY CREEK CROAKER

This frog is a FREAK. Designed from the ground up, the Caney Creek Croaker is modeled after a boat hull. The front rides very high providing an almost instantaneous pop to the top. The overly round belly prevents roll. If it does somehow get upside down all you have to do is stop your retrieve and it will roll back over. The "rear" of the Croaker models a twin pad design, with a concave section to trap air and increase water agitation while retrieved. The rear also has an even lower section that acts like a rudder, making it run straight, but also creates what would best be described as a subtle chine walk. Overall it produces a true running bait with unique water agitation and sound.

Item No.	Model No.	Mold Type	Size (in inches)	Cavities	Price
95104	CCF17503	Frog	1.75	3	74.99
95101	CCF3001	Frog	3	1	49.50
95102	CCF3501	Frog	3.5	1	54.50
95103	CCF4001	Frog	4	1	59.50

CROAKER PRO-SERIES

Item No.	Model No.	Mold Type	Size (in inches)	Cavities	Price
95248	CCF175020	Frog	1.75	20	425.00

4" CROAKER BELLY

To achieve optimum results pour the belly in the Croaker Mold and then inject the Croaker.

Item No.	Model No.	Mold Type	Size (in inches)	Cavities	Price
95014	CCFB406	Belly	4	6	49.50



Use the Croaker Belly to create a multi-color bait

BEETLE BUG

The subtle action of this split tail bait is all it takes to bring them out of the cover and make them eat. 1/4" in diameter and 2.25" long it's the perfect size for a variety of species. The tail mold is available for added ease in producing two colored baits.

Item No.	Model No.	Mold Type	Size (in inches)	Cavities	Price
95046	BBC22510	Grub	2.25	10	74.99

BEETLE BUG TAIL

Item No.	Model No.	Mold Type	Size (in inches)	Cavities	Price
95022	BBC22510T	Tail	2.25	10	49.50



CC GLIDER MOLDS

Nothing heats up the pan fish bite like the Glider. Graced with a flappin' paddle tail this little bait will thump them into submission. A variety of fish catching sizes make it a perfect addition to a small jig head. Tail and Laminate plates are available for making eye popping two color baits.

Item No.	Model No.	Mold Type	Size (in inches)	Cavities	Price
95047	CCG1508	Grub	1.5	8	79.50
95048	CCG2008	Grub	2	8	89.50
95121	CCG3004	Grub	3	4	57.50

GLIDER TAIL

Item No.	Model No.	Mold Type	Size (in inches)	Cavities	Price
95025	CCG2T08	Tail	2	8	49.50
95011	CCG308	Tail	3	8	54.50

GLIDER LAMI PLATE

Item No.	Model No.	Mold Type	Size (in inches)	Cavities	Price
95150	LCG0301	Lami Plate	3	4	15.99



CHUB GRUBS

ST CHUB GRUB

This is a 4 cavity Swimmin' Chub Grub. The thing that sets the ST Grubs apart from other grubs is its versatility. You can swim it at a fast retrieve and really turn some water, or you can use light weight and the tail goes into finesse mode. It works great on the fall with any amount of weight, swimming, or bouncing it off the bottom. This is a serious, big fish, thumpin' grub.

Item No.	Model No.	Mold Type	Size (in inches)	Cavities	Price
95111	STCG304	Grub	3	4	99.50
95116	STCG404	Grub	4	4	109.50



Split Tail

TWIN TAIL CHUB GRUB

Your classic twin tail bait used for decades by hard core anglers. The 3" Twin Tail Chub Grub is approximately 3.5" on the fall or retrieve. The body measures just under 1/2" in diameter. The 3.5" Twin Tail Chub Grub is approximately 4" on the fall or retrieve. The body measures a hair over 1/2" in diameter. The 4" Twin Tail Chub Grub is 4.5" - 4.75" on the fall or retrieve.

Item No.	Model No.	Mold Type	Size (in inches)	Cavities	Price
95108	TTCG302	Grub	3	2	59.50
95113	TTCG351	Grub	3.5	1	42.50
95117	TTCG401	Grub	4	1	44.50



Twin Tail

CHUB GRUB COMBO

This is a special combo mold that has both the 3" Twin Tail Chub Grub, and the 3" Swimmin' Chub Grub. Both are approximately 3.5" on the fall or retrieve. The body measures just under 1/2" in diameter. If you fish a smaller jig this mold will seriously hook you up.

Item No.	Model No.	Mold Type	Size (in inches)	Cavities	Price
95109	TTCG301	Grub	3	1	54.95



K-CHUB

Based on the semi-oval Chub Grub body. While the tail itself is thin and moves easily, it is large with a wide base causing it to really displace water and cause a serious thump.

Item No.	Model No.	Mold Type	Size (in inches)	Cavities	Price
95260	KGR2506	Grub	2.5	6	69.50
95261	KGR3004	Grub	3	4	59.50
95112	KGR3502	Grub	3.5	2	49.50
95262	KGR4002	Grub	4	2	69.50



SKIRTED CHUB GRUB

Skirted Chub Grub is the marriage of a Twin Tail Grub with a Skirt. This union provides a great bait for flipping and pitching. The bait can be injected one color, or you can inject the tail color, cut the grub off, and then inject the bait.

If you have one of our molds that already has a skirt (uses a spline) you do not need to buy another one if you don't mind swapping out the tips. The spline can be used in any of the regular skirted molds. If you don't already have a spline (one of our skirted molds), you will need the spline to make the tail (page 132).

Item No.	Model No.	Mold Type	Size (in inches)	Cavities	Price
95110	SCG301	Grub	3	1	64.50
95114	SCG401	Grub	4	1	69.50



FLAP JACK

This bait serves it up with all the goodness a hungry pan fish could want. Cunningly subtle it is a no nonsense bait that brings them running. Use the tail mold to create two color offerings that keep them coming back for more.

Item No.	Model No.	Mold Type	Size (in inches)	Cavities	Price
95054	FJC20010	Grub	2	10	74.99
95053	FJC25010	Grub	2.5	10	79.50

FLAP JACK TAIL

Item No.	Model No.	Mold Type	Size (in inches)	Cavities	Price
95028	FJC20010T	Tail	2	8	49.50



GLADE GRUB

The Glade Grub is a twin tail bait specifically designed for working heavy cover like grass, stumps, rocks and around boat docks. The tails are beveled giving it an incredible action on the fall and retrieve, regardless of how fast or slow it is moving. No fish will be able to resist this bait on the fall with super light weight. Recommended as light a weight as the wind, water depth, and your patience will allow. Don't limit this bait to a jig. Fish it on a split shot, Texas rigged, Carolina rigged, or on a drop shot. The bottom line is this is one of those baits that just flat out produces.

Item No.	Model No.	Mold Type	Size (in inches)	Cavities	Price
95118	GG30002	Grub	3	2	49.50
95119	GG40001	Grub	4	1	44.50
95120	GG40002	Grub	4	2	69.50



GO-GO GRUB

The shuddering vibration of this grubs tail is the ultimate imitation of a fleeing bait fish. Go-go tail action equals fish feeding reaction plain and simple. The tail mold is available for that added attraction of a two-colored presentation.

Item No.	Model No.	Mold Type	Size (in inches)	Cavities	Price
95055	GGC2508	Grub	2.5	8	89.50

GO-GO GRUB TAIL

Item No.	Model No.	Mold Type	Size (in inches)	Cavities	Price
95029	GGC2508T	Tail	2	8	49.50



ICE PICK

The Ice Pick is triangle in shape presenting a prismatic effect for your glitter. You can not get the tail to stop quivering. The unique shape of the tail gives it a realistic profile, while also allowing maximum resistance and action from the taper. This bait can be cut down even further for the toughest conditions.

Item No.	Model No.	Mold Type	Size (in inches)	Cavities	Price
95041	IP10020	Grub	1	20	69.50
95039	IP158012	Grub	1-5/8	12	49.50



FRY

The Fry is an “action” profile bait with a very unique stinger tail. The tail is triangle shaped tapering from the body to almost nothing. The unique shape of the tail gives it a realistic profile, while also allowing maximum resistance and action from the taper. The Fry is 2.5” long and 1/4” at it’s widest. The body is 1” long and the tail is 1.5” long.

Item No.	Model No.	Mold Type	Size (in inches)	Cavities	Price
95044	SMF25012	Grub	2.5	12	79.50
95239	SMF25024	Grub	2.5	24	149.50



FRY LAMI PLATE

Item No.	Model No.	Mold Type	Size (in inches)	Cavities	Price
95146	L25F	Lami Plate	2.5	12	19.50

NANO FRY

Continuing the success of the Small Fry, Fry and Swim Fry, the Nano Fry measures in at a whopping 1”, but is sure to be a heavyweight when it comes to hitting your favorite fishing hole. The Nano Fry has an “action” shad / fry profile with a very unique stinger tail. The tail is triangle shaped, tapering from the body to almost nothing. The unique shape of the tail gives it a realistic profile, while also allowing maximum resistance and action from the taper. The Nano Fry is 1” long and 3/16” wide.

Item No.	Model No.	Mold Type	Size (in inches)	Cavities	Price
95042	NFRY1016	Grub	1	16	64.50



NANO FRY LAMI PLATE

Item No.	Model No.	Mold Type	Size (in inches)	Cavities	Price
95142	LNF1016	Lami Plate	1	16	17.50

SMALL FRY

The Small Fry is an “action” profile bait with a very unique stinger tail. The tail is triangle shaped tapering from the body to almost nothing. The unique shape of the tail gives it a realistic profile, while also allowing maximum resistance and action from the taper.

Item No.	Model No.	Mold Type	Size (in inches)	Cavities	Price
95040	SMF17512	Grub	1.75	12	69.50
95043	SMF22512	Grub	2.25	12	74.50



SMALL FRY LAMI PLATE

Item No.	Model No.	Mold Type	Size (in inches)	Cavities	Price
95140	LSF1751	Lami Plate	1.75	12	17.99
95144	L225SF	Lami Plate	2.25	12	18.99



SMALL FRY PRO-SERIES

Item No.	Model No.	Mold Type	Size (in inches)	Cavities	Price
95238	SMF17524	Grub	1.75	24	135.00

SMALL FRY LAMI PLATE PRO-SERIES

Item No.	Model No.	Mold Type	Size (in inches)	Cavities	Price
95141	LSF17524	Lami Plate	1.75	24	29.50

THE SWIM FRY

The Swim Fry has more wiggle than you can shake a stick at. Combining the proven action of the Go-Go Grub and the profile of the Small Fry, this bait is going to be tough to beat when the fish are active. While the size of this bait makes it a prime candidate for Crappie, the action has already proven itself on everything that swims. A tail mold is also available (Go-Go Grub Tail, see page 115).

Item No.	Model No.	Mold Type	Size (in inches)	Cavities	Price
95058	SMF2508	Grub	2.5	8	89.50



SWIM FRY LAMI PLATE

Item No.	Model No.	Mold Type	Size (in inches)	Cavities	Price
95147	LSF2508	Lami Plate	2.5	8	29.99

SUPER FRY

The Super Fry is definitely a multi-species bait (fish slayer). From bedding Bass to Crappie it has caught fish when traditional baits haven't. Based on shared characteristics of other baits we've designed, this bait is going to be a show stopper for Small Mouth and Walleye as well. It has a triangular shaped stinger tail that tapers to a fine point. The body is 1.5" long, 5/16" wide and 1/2" at the belly. The triangular shaped tail is 5/16" wide, 1/4" thick and tapers to a point. The stinger tail provides an extremely enticing action with no rod movement. Overall the bait has a surprisingly nice glide to it - almost like a small jerk bait.

Item No.	Model No.	Mold Type	Size (in inches)	Cavities	Price
95099	SF35010	Grub	3.5	10	119.50



SUPER FRY LAMI PLATE

Item No.	Model No.	Mold Type	Size (in inches)	Cavities	Price
95153	LSF3510	Lami Plate	3.5	10	18.99

RAD TAD

This aquatic bug imitation gets bit on many occasions simply because it's different. The long slender Y-shaped tail comes alive with the slightest of movements bringing pan fish out of hiding for an easy meal. A tail mold is available for putting the finishing touch on this ultra buggy bait.

Item No.	Model No.	Mold Type	Size (in inches)	Cavities	Price
95056	RTC2010	Grub	2	10	74.99



RAD TAD TAIL MOLD

Item No.	Model No.	Mold Type	Size (in inches)	Cavities	Price
95037	RTC2010T	Tail	2	10	49.50

SPLIT TAIL

Fat and Sassy, this bait represents an enticing meal for even the most finicky fish. The simple twin tail design gives them that subtle wave they simply cannot endure. Fish it at the full 4" or size it down to match the local forage this is a killer bait for multiple species both fresh and salt water.

Item No.	Model No.	Mold Type	Size (in inches)	Cavities	Price
95115	STG4003	Grub	4	3	59.50



SPLIT TAIL LAMI PLATE

Item No.	Model No.	Mold Type	Size (in inches)	Cavities	Price
95157	LTT403	Lami Plate	4	3	18.99

THUMP GRUB

Our staff has had some good success with this Thump Grub in both fresh and salt water. It's a bait that appeals to multiple species but is without a doubt aimed straight in the face of the Walleye, Smallmouth, and Redfish. The Thump Grub has a relatively subtle thumping action backing it up.

Item No.	Model No.	Mold Type	Size (in inches)	Cavities	Price
95286	TG515	Grub	1.5	5	69.00
95287	TG425	Grub	2.5	4	69.00
95263	TG335	Grub	3.5	3	69.00



WUTZ-IT

The Wutz-It is a beast of a bait. It is a Jerk Bait mold with the baits aligned vertically to easily facilitate pouring laminates by hand, then injecting, or with a two color injector. It also has a hook slot and place for eyes. The tail has an incredible subtle action that is sure to trigger strikes. This mold is available with a hook slot, or without. When using it without a hook slot it is normally fished on a jig head with an exposed hook. Please note: With the hook slot this mold takes a medium injector. Without the hook slot it requires the large injector.

Item No.	Model No.	Mold Type	Size (in inches)	Hook Slot	Cavities	Price
95265	WUT2512	Jerk Bait	2.5	No	12	99.50
95133	WUT4004H	Jerk Bait	4	Yes	4	84.50
95135	WUT5004H	Jerk Bait	5	Yes	4	89.50
95136	WUT5004	Jerk Bait	5	No	4	89.50
95137	WUT7003H	Jerk Bait	7	Yes	3	109.50
95138	WUT7003	Jerk Bait	7	No	3	109.50

WUTZ-IT LAMI PLATE

Item No.	Model No.	Mold Type	Size (in inches)	Cavities	Price
95148	L25001	Lami Plate	2.5	1	19.50
95158	LWW401	Lami Plate	4	1	18.99
95166	LWT5001	Lami Plate	5	1	19.50
95172	LWU701	Lami Plate	7	1	19.99



WUTZ-IT LAMI PRO-SERIES

Item No.	Model No.	Mold Type	Size (in inches)	Hook Slot	Cavities	Price
95255	WUT5016H	Jerk Bait	5	Yes	16	325.00
95254	WUT5016	Jerk Bait	5	No	16	325.00
95257	WUT7008H	Jerk Bait	7	Yes	8	240.00
95256	WUT7008	Jerk Bait	7	No	8	240.00



WUTZ-IT LAMI PLATE PRO

Item No.	Model No.	Mold Type	Size (in inches)	Cavities	Price
95167	LWT5016	Lami Plate	5	16	35.00

STINGER WUTZ-IT

The Stinger Wutz-It is 2.5" long and .25" wide, and is spot on as a small bait fish. The thin tail never stops moving. The mold is 12 cavities, aligned vertically to make pouring or injecting laminates a snap.

Item No.	Model No.	Mold Type	Size (in inches)	Cavities	Price
95057	WUTS2512	Jerk Bait	2.5	12	99.50



WUTZ-IT FORKTAIL

A twist on one of our most popular selling soft plastic molds, we've taken the Wutz-It Jerk Bait mold and have opened up the door on versatility with the new Wutz-It Forktail. Available in two sizes the new split tail design gives this bait a great gliding action that perfectly matches a bait fish. These baits roll when snapped or twitched and are great baits for getting reaction strikes out of lethargic fish. Glide it, swim it, snap it, rip it, jerk it, fish it fast, fish it slow, these two new baits are sure to put some serious thump running up your line.

Item No.	Model No.	Mold Type	Size (in inches)	Cavities	Price
95304	WTZ440	Jerk Bait	4	4	84.50
95303	WTZ450	Jerk Bait	5	4	89.50



WUTZ-IT FORKTAIL LAMI PLATE

Item No.	Model No.	Mold Type	Size (in inches)	Cavities	Price
95309	WTZ440L	Lami Plate	4	4	18.99
95308	WTZ450L	Lami Plate	5	4	18.99

LAKE FORK LIZARD

The Lake Fork Lizard is specifically designed to entice Spring and Fall feeding patterns, as well as trigger defensive instincts. It has a curved "W" shaped belly which encourages a gliding motion, while the "C" tail displaces a unique vibration that is bound to draw a fishes attention. The tail is triangle shaped just like a real lizard, and is available ringed or solid. Both have great action.

Item No.	Model No.	Mold Type	Tail	Size (in inches)	Cavities	Price
95174	LFL8001	Lizard	Solid	7	1	69.50
95175	LFLR801R	Lizard	Ring	7	1	89.50
95290	LFL4502	Lizard	Solid	4.5	2	69.50



THE GARY YAMAMOTO SENKO™

This IS "The Senko" not a knock off as you may find elsewhere. From bow to transom and every little rib in between it is to exact specifications. As we have done in the past, we have teamed up with Gary Yamamoto and he has given us license to manufacture a do it yourself mold to create a bait with the very same specifications as his legendary Senko, one of the most popular soft plastic baits in history.

Item No.	Model No.	Mold Type	Size (in inches)	Cavities	Price
95294	GYS4004	Senko	4	4	98.00
95258	GYS5004	Senko	5	4	98.00
95296	GYS6004	Senko	6	4	98.00



GARY YAMAMOTO SENKO™ LAMI PLATE

Item No.	Model No.	Mold Type	Size (in inches)	Cavities	Price
95295	GYS4004L	Lami Plate	4	4	18.99
95259	LGYS5004	Lami Plate	5	4	18.99
95297	GYS6004L	Lami Plate	6	4	18.99

> NEW

> NEW

> NEW

> NEW

SWIM STICK

If you are flipping docks or fishing heavy vegetation the Swim Stick will get into the smallest of places and puts off a great vibration on the fall and retrieve. It should also excel on a drop shot rig.

Item No.	Model No.	Mold Type	Size (in inches)	Cavities	Price
95190	SMW4003	Swim Bait	4	3	64.50
95191	SMW6002	Swim Bait	6	2	54.50

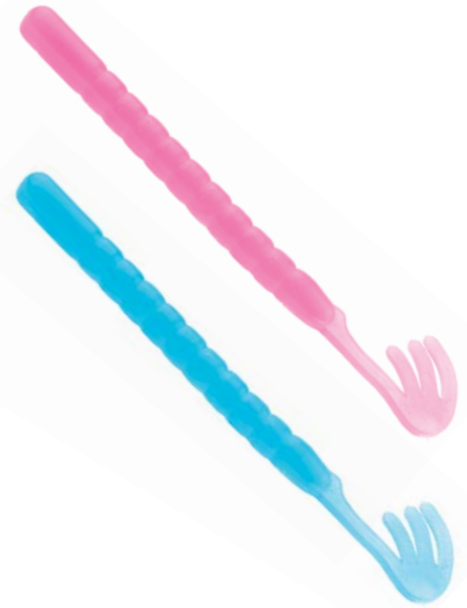
SWIM STICK TAIL MOLD

6" Swim Worm Tail Mold.

Item No.	Model No.	Mold Type	Size (in inches)	Cavities	Price
95019	SMW6004T	Tail	6	4	34.50

SWIM STICK LAMI PLATE

Item No.	Model No.	Mold Type	Size (in inches)	Cavities	Price
95170	LSW6002	Lami Plate	6	2	16.50



SMOKIN' SHAD

It has a hook slot and tapers to a traditional swim bait boot tail. They eyes are recessed allowing them to be glued in, or put in place and dipped in clear plastic. The mold is extremely easy to shoot and produces a great bait. The action is awesome. We recommend using size 5 (9/32") eyes on this bait. The 3.75" Smokin' Swim is 5/8" at it's tallest and just under 1/2" at it's widest. The 4.75" Smokin' Shad is 3/4" at it's tallest and just over 1/2" at it's widest.

Item No.	Model No.	Mold Type	Tail	Size (in inches)	Cavities	Price
95183	375SS001	Swim Bait	Solid	3.75	1	64.50
95188	475SS001	Swim Bait	Ring	4.75	1	69.50



Size 5 eyes work great with the Smokin' Shad
See page 77

SWIM SHAD

The ultimate in imitating most any bait fish that swims the Swim Shad's thumping tail provides the action and pulse that brings them running for a tasty bite. The original tail puts off a heavier thump and is ideal for a constant retrieve. The thin tail offers that same action even on a slow retrieve and is perfect for a stop and go presentation.

Item No.	Model No.	Mold Type	Tail	Size (in inches)	Cavities	Price
95181	SMS3503	Swim Bait	Original	3.5	3	59.50
95182	SMS3503	Swim Bait	Thin	3.5	3	59.50
95184	SMS4502	Swim Bait	Original	4.5	2	54.50
95185	SMS4502	Swim Bait	Thin	4.5	2	54.50
95186	SMS4504	Swim Bait	Original	4.5	4	99.50
95187	SMS4504	Swim Bait	Thin	4.5	4	99.50



Original Tail

SWIM SHAD PRO-SERIES

Item No.	Model No.	Mold Type	Tail Type	Size (in inches)	Cavities	Price
95241	SMS35012	Swim Bait	Original	3.5	12	245.00
95242	SMS35012	Swim Bait	Thin	3.5	12	245.00

SWIM SHAD LAMI PLATE

Item No.	Model No.	Mold Type	Size (in inches)	Cavities	Price
95154	LSS37501	Lami Plate	3.5	3	18.50
95161	LSS4502	Lami Plate	4.5	2	16.50
95162	LSS4504	Lami Plate	4.5	4	19.50

ICE TICKLER

This twenty cavity mold is a smooth shooter and produces 20 1" baits capable of tickling those tight lipped Pannies into biting when other baits won't. The Ice Tickler works excellent on small ice jigs and spoons. Thread the body onto your favorite jig and let the tantalizing tail tickle up big crappies, perch, and gills onto your dinner plate!

Item No.	Model No.	Mold Type	Size (in inches)	Cavities	Price
95301	LIT201	Grub	1	20	59.00



SWIM TOAD "BIG FOOT"

The Swim Toad "Big Foot" has great top water action, but really excels flipping and as a Swim Toad. Toss it around the veggies and buzz it in, or let it fall and swim it in. You could catch the fish of a lifetime at any point. And when you do hook-up, there is absolutely no doubt. Bass hit this thing like a sledgehammer and won't let go. For laminates you can hand pour the belly or use a blending block.

Item No.	Model No.	Mold Type	Size (in inches)	Cavities	Price
95105	TBF3501	Toad	3.5	1	54.50
95106	TBF4001	Toad	4	1	57.50
95107	TBF4501	Toad	4.5	1	59.50



SWIM TOAD BELLY MOLD

Item No.	Model No.	Mold Type	Size (in inches)	Cavities	Price
95015	STB4006	Belly	4	6	47.50
95016	STB4506	Belly	4.5	6	49.50

CRAW TUBE

If you're fishing tubes to mimic Crayfish this might be just the ticket. Fish it like a tube or T-rig it, either way it will make them stand up and take notice. Nobody screams Crayfish like the Craw Tube, and Crayfish are good.

Item No.	Model No.	Mold Type	Size (in inches)	Insert Size	T-Rig Insert Size	Cavities	Price
95210	TUBC401	Tube	4	1-3/4"	1-1/2"	1	59.00

Requires a spline and insert, see page 132



FLIPPIN' GORILLA

The mold is just like our other tube molds, it makes an awesome bait. The spline fits like a glove and there is no flashing. This is a great bed bait, flipping bait, jig trailer, Carolina rig, T-Rig, etc.

Item No.	Model No.	Mold Type	Size (in inches)	Insert Size	T-Rig Insert Size	Cavities	Price
95211	FLGT4501	Tube	4.5	2-1/4"	2"	1	74.50

Requires a spline and insert, see page 132



GORILLA TUBE

This is a great bed bait, flipping bait, jig trailer, Carolina rig, T-Rig, etc. If you haven't fished a tube before this is a great one to start with as it has lots of movement and is very productive using it the same way you would a creature bait. Here's a fishing tip that works great on most tube baits (T-Rig or C-Rig): plug the opening of the tube with a small piece of worm and hold it in place with a toothpick. This will trap the air in the tube and cause it to float off the bottom.

Item No.	Model No.	Mold Type	Size (in inches)	Insert Size	T-Rig Insert Size	Cavities	Price
95192	GRT4001	Tube	3-4	1-3/4"	1-1/2"	1	69.00
95212	GRT4501	Tube	4.5	2-1/4"	2	1	72.50

Requires a spline and insert, see page 132



G-TUBE

He's a fatty... or is he? Larger ribs and a full head size make this a solid contender for double (or triple) dipping into some awesome fish catching goodness. It also catches fish as is. It's a firm contender and a very versatile tube in a good fish catching size.

Item No.	Model No.	Mold Type	Size (in inches)	Insert Size	T-Rig Insert Size	Cavities	Price
95195	TUBG401	Tube	4	1-3/4"	1-1/2"	1	49.00

Requires a spline and insert, see page 132



SKIRT MOLD

This mold makes a 5" skirt that can be attached to any bait (5" diameter / 2.25" hanging). This mold uses the same spline as all of our skirted molds use. You just inject the skirt, remove the spline, trim the sprue off and place it in the Tube or Chub Grub mold as an example. This is a really easy and fast way to make skirted baits that are different colors and minimize time and reheats.

Item No.	Model No.	Mold Type	Size (in inches)	Cavities	Price
95209	SKT5001	Tube	5	1	54.99

Requires a spline, see page 132



SUPER SMOOTHY TUBE

The Smoothy Tube is everything "tube" in a moderately slimmer and sleek profile. It's not quite as bulky as many tubes and is popular with Smallmouth, Large Mouth, Crappie and Walleye too, it will allow you to finesse a number of species in for a closer look.

Item No.	Model No.	Mold Type	Size (in inches)	Insert Size	T-Rig Insert Size	Cavities	Price
95193	TUBS301	Tube	3	1-1/4"	1"	1	49.50
95281	TUBS351	Tube	3.5	1-1/2"	1-1/4"	1	50.50
95196	TUBS401	Tube	4	1-3/4"	1-1/2"	1	54.50

Requires a spline and insert, see page 132



TUBE

These tubes are just slightly longer and bigger than their Smooth Tube cousins giving them just a little more bulk for those fish that are looking for a full dinner plate. Feel like making them bigger.....dip them again....adding more to the table.

Item No.	Model No.	Mold Type	Size (in inches)	Insert Size	T-Rig Insert Size	Cavities	Price
95194	TUB3501	Tube	3.5	1-1/4"	1"	1	49.50
95197	TUB4501	Tube	4.5	2-1/4"	2"	1	59.50

Requires a spline and insert, see page 132



ZIPPER TUBE

This tube bait is designed specifically for bed fishing. Heavily ribbed with tantalizing tentacles, this bait will be hard for any Bass to ignore. The spline fits like a glove and there is no flashing. Add a touch of softener or worm oil to the insert and it slides right off. The head is smooth for easy dipping and the body has a very small scallop.

Item No.	Model No.	Mold Type	Size (in inches)	Insert Size	T-Rig Insert Size	Cavities	Price
95198	TZL4501	Tube	4.5	2-1/4"	2"	1	149.00

Requires a spline and insert, see page 132



C-TAIL WORM

Our C-Tail worm might just have the most elegant action of any worm ever. The tail on this worm moves effortlessly, and looks like a ribbon in the wind - with practically no weight. The head of the worm was designed to protect your knot from the weight, there is plenty of worm for your hook to Texas rig. There's also a nice sized egg sack, followed by a tight body that really moves with the lightest movement or current.

Item No.	Model No.	Mold Type	Size (in inches)	Cavities	Price
95225	WCTL804	Worm	8	4	79.50



C-TAIL TAIL

This is a universal c-tail, fitting other sizes (when it makes sense) as well.

Item No.	Model No.	Mold Type	Size (in inches)	Cavities	Price
95026	WCTLT04	Tail	8	4	34.50

CRAW WORM

Measuring 5" with a flat bottom and small pincher like tail, the crawl worm is the perfect size for pressured waters. The flat bottom gives it a slow erratic fall on a shaky head or wacky rigged.

Item No.	Model No.	Mold Type	Size (in inches)	Cavities	Price
95226	CRW004	Worm	5	4	57.50

CRAW WORM LAMI PLATE

Item No.	Model No.	Mold Type	Size (in inches)	Cavities	Price
95168	LCW004	Lami Plate	5	4	18.50



RIBBED RIBBON TAIL WORM

It's the same proven design of the ribbon tail worm with the added enticement and bulk of a ringed body that not only helps to conceal the hook but captures tiny air bubbles for a natural breathing action. Aside from giving the bait a bulkier appearance without the additional weight, the ribs displace a significant amount of water, creating a bigger disturbance below the surface and attracting fish from greater distances.

Item No.	Model No.	Mold Type	Size (in inches)	Cavities	Price
95237	RTW6506	Worm	6.5	6	300.00
95232	RRTW702	Worm	7	2	129.50
95227	RRTW101	Worm	10	1	99.00



EL GUSANO

El Gusano is a pretty straight forward worm designed to coax a difficult bite into happening. The front half of the worm is round then transitions to a flat tail section. Perfect for drop shot or shakey head presentations. These worms will boost your percentages with out a doubt.

Item No.	Model No.	Mold Type	Size (in inches)	Cavities	Price
95266	ELG345	Drop Shot	4.5	3	99.00
95268	ELG360	Drop Shot	6	3	129.00



EL GUSANO LAMI PLATE

Item No.	Model No.	Mold Type	Size (in inches)	Cavities	Price
95267	ELG345L	Lami Plate	4.5	3	18.99
95269	ELG360L	Lami Plate	6	3	19.99

DRAGON TAIL FINESSE WORM

The Finesse Dragon Tail Worm is 5/16" in diameter and has a very fast taper. The totally unique tail provides resistance in all directions making the worm really move. It works great on a drop shot, Wacky rigged, Texas rigged weightless or with a small split shot.

Item No.	Model No.	Mold Type	Size (in inches)	Cavities	Price
95218	45DTW004	Worm	4.5	4	69.50
95219	FNDT6004	Worm	6	4	79.50



DRAGON TAIL TAILS

Tail Mold for the 4.5" and 6" Dragon Tail. 8 cavity injection mold.

Item No.	Model No.	Mold Type	Size (in inches)	Cavities	Price
95027	DTT08	Tail	4.5 or 6	8	49.50



FREEDOM FRY

The Freedom Fry is a mold that produces a bait that looks as good as it fishes. This bait is very versatile: Texas Rig, Carolina Rig, Shaky Head, or Wacky. The flat bottom produces a slow enticing fall. This is a great mold that is very easy to make lots of baits in a short period of time.

Item No.	Model No.	Mold Type	Size (in inches)	Cavities	Price
95220	FF4004	Worm	3.85	4	47.50
95216	FF5004	Worm	4.85	4	49.50



FREEDOM FRY LAMI PLATE

Item No.	Model No.	Mold Type	Size (in inches)	Cavities	Price
95285	FFL3851	Lami Plate	3.85	4	18.99
95163	LFF401	Lami Plate	4.85	4	18.99

FREEDOM FRY OPEN POUR

This is a great open pour mold that is very easy to hand pour, or you can use a small injector to fill the cavities.

Item No.	Model No.	Mold Type	Size (in inches)	Cavities	Price
95124	FF4050P	Hand Pour	3.85	5	34.50
95125	FF5050P	Hand Pour	4.85	5	39.50

RIBBON TAIL WORM

The classic ribbon tail design has long been the staple for tournament pros wanting to put a kicker fish in the live well. These worms deliver an enticing swimming action when retrieved or on the fall and the tail moves effortlessly with practically no weight and at the slowest retrieval speeds. It's a tantalizing motion that they just can't resist.

Item No.	Model No.	Mold Type	Size (in inches)	Cavities	Price
95221	RTW4752	Worm	4.75	2	69.50
95233	RTW702	Worm	7	2	74.50
95234	RTW0902	Worm	9	2	119.50
95228	RTW1001	Worm	10	1	54.50
95229	RTW1052	Worm	10.5	2	129.50
95230	RTW1202	Worm	12	2	139.50
95231	RTW1402	Worm	14	2	149.50



RIBBON TAIL WORM PRO-SERIES

Item No.	Model No.	Mold Type	Size (in inches)	Cavities	Price
95245	RTW4756	Worm	4.75	6	200.00

RIBBON TAIL WORM TAIL MOLD

Item No.	Model No.	Mold Type	Size (in inches)	Cavities	Price
95017	RTWT4752	Tail	4.75	2	47.50
95021	RRTW702	Tail	7	2	54.50
95009	RRTW102	Tail	10	2	54.50

RING-IT WORM

This 4.5" Ring-it Worm measures 4.5 swimming and 3.85 in the mold. The smaller diameter core is ringed with 3/8" diameter rings giving this worm plenty of movement for a shorter worm. The 6" measures 6" swimming and 5.35 in the mold. It's core is ringed with 7/16" diameter rings. "Slinky" is a good way to describe the action of the 6" worm. Both of these worms are backed up by the subtle ring type tail adding some enticing action to the presentation. Both sizes are wonderful baits for Finesse Jigging or Dropshot fishing Walleye, Smallmouth or Largemouth.

Item No.	Model No.	Mold Type	Size (in inches)	Cavities	Price
95270	RIW245	Worm	4.5	2	69.00
95271	RIW260	Worm	6	2	79.00



STUMP THUMPER

The 12" "Stump Thumper" measures 10" in the mold, 12" on the fall. It is a big worm with a thick tail that is really a hybrid between a "C" tail and a "U" tail. It really puts off some serious vibrations under water. You can experiment with your plastic hardness and get more of a finesse presentation, or a serious thump out of this worm. This mold is available as an injection or open pour mold.

Item No.	Model No.	Mold Type	Size (in inches)	Cavities	Price
95224	WMC12001	Worm	12	1	49.50



12" STUMP THUMPER TAIL

Item No.	Model No.	Mold Type	Size (in inches)	Cavities	Price
95010	WMCT1201	Tail	12	2	49.50

STUMP THUMPER OPEN POUR

Item No.	Model No.	Mold Type	Size (in inches)	Cavities	Price
95122	WMCOP01	Hand Pour Worm	12	1	27.50

SPEAR TAIL WORM

This is a great bait that has an incredible subtle action. The head of the worm was designed to protect your knot from the weight, there is plenty of worm for your hook to Texas rig. There's also a nice sized egg sack, followed by a tight body that really moves with the lightest movement or current. The spear tail provides nice resistance and plenty of water displacement.

Item No.	Model No.	Mold Type	Size (in inches)	Cavities	Price
95222	WSP6005	Worm	6	5	84.50
95236	WSP7004	Worm	7	4	79.50



SPEAR TAIL TAIL

This is a universal spear tail, fitting other sizes (when it makes sense) as well.

Item No.	Model No.	Mold Type	Size (in inches)	Cavities	Price
95038	WSP7T08	Tail	7	8	34.50

TAPERED TROUT / FINESSE WORM

The Trout / Finesse Worm is 3" long and .19" in diameter, tapering to .12". This mold shoots super easy and makes perfect worms every time. Besides making a great Trout worm, it also makes a great smaller Bass bait: Wacky or Drop Shot. Pan Fish love it also. It is a super solid all around bait.

Item No.	Model No.	Mold Type	Size (in inches)	Cavities	Price
95062	TRT03010	Worm	3	10	74.50
95240	TRT03040	Worm	3	40	275.00



TUBE WORM

The 6.75" tube worm makes an awesome bait, every time. The spline fits like a glove and there is no flashing. Add a touch of softener or worm oil to the insert and it slides right off. The head is smooth for easy dipping and the body has a very small scallop.

If you have one of our molds that already has a skirt (uses a spline) you do not need to buy another one if you don't mind swapping out the tips. The spline can be used in any of the regular skirted molds. If you don't already have a spline (one of our skirted molds), you will need the spline to make the tail (page 132).

Item No.	Model No.	Mold Type	Size (in inches)	Cavities	Price
95223	TUB6751	Worm	6.75	1	84.99



THUMPER SWIM FRY

The Thumper Fry is a 2" paddle tail swim bait. The body is 1" long, .25" wide and .35" tall. The tail is 1" long including the paddle. The bait is set vertically in the mold to allow easy laminates. *Please note, to get this mold to shoot / vent properly a small tag needed to be added to the tail. It is very small (.01) and easily removed.

Item No.	Model No.	Mold Type	Size (in inches)	Cavities	Price
95059	TFRY210	Worm	2	10	99.99
95253	TFRY220	Worm	2	20	185.00



TROUT WORM

The epitome of simplicity the Trout Worm is 2.95" in length and .18" in diameter. A super all around bait not only for Trout but Pan Fish love it too. Simple and effective for a variety of species.

Item No.	Model No.	Mold Type	Size (in inches)	Cavities	Price
95045	TRT29520	Worm	2.95	20	69.50



WACKM' WORM

At it's biggest and baddest, this worm measures a whopping 13". While that may seem like too much worm for most applications, fish it and you'll see it's not only not too much worm, but championships are being won it. The Wackm' Multi Worm is a 2 cavity mold that produces 4 different size worms.

Item No.	Model No.	Mold Type	Size (in inches)	Cavities	Price
95235	WWM1301	Worm	13	2	69.99



WACKM' WORM OPEN POUR

Item No.	Model No.	Mold Type	Size (in inches)	Cavities	Price
95123	WWOP132	Hand Pour Worm	13	2	38.50

HELLGY

Hellgrammites (the larvae of the Dobsonfly) are largely aquatic creatures that spend their time along the rocky bottoms of streams and creeks. Hellgrammites have long been a choice bait for smallmouth fishermen and trout fishermen alike. It was with that in mind along with input/demand from our customers that we produced this pair of molds to compliment those needs.

Item No.	Model No.	Mold Type	Size (in inches)	Cavities	Price
95291	HLG2225	Creature	2.25	2	79.00
95292	HLG230	Creature	3	2	79.00



Visit: www.do-itmolds.com
to learn more about soft baits

CRYSTAL CLEAR PLASTISOL

Crystal Clear Plastisol is a brand new formula developed to our exact specifications - for the way we use plastisol. We went outside the fishing industry for a fresh perspective on plastisol. We worked very closely with chemist and engineers to develop a "phthalate free" plastic engineered specifically for the harsh environment of a microwave. As a result, it not only works great in a microwave, it works great in a pot or on a burner.

Frankly, Crystal Clear is the clearest, least smoke and smell, easiest to use plastic available. It is phthalate free, does not make oily baits, it doesn't hard pack, micro bubbles are not an issue, it's honestly the best plastic available.

PHTHALATE FREE

Qty.	Price	Plastisol Type		
		Hard	Regular	Soft
1 gallon	54.99	#91379	#91376	#91373
2.5 gallons	94.50	#91380	#91377	#91374
5 gallons	176.96	#91381	#91378	#91375

CRYSTAL CLEAR PLASTISOL PINT

Qty.	Price	Plastisol Type		
		Hard	Regular	Soft
1 pint	9.99	#91396	#91382	#91395



CRYSTAL CLEAR PLASTISOL HARDENER

Item No.	Qty.	Price
91383	1 pint	14.50



CRYSTAL CLEAR SOFTENER

Item No.	Qty.	Price
91390	5.5 oz	5.75
91391	1 pint	14.00



UPPER HAND SCENTS

5.5 ounces of Upper Hand Scent. Please note: Coffee Shad is a dark scent and should only be added to dark baits or to the bag of lighter colored baits.

Color	Item No.	Price
Toad Xplode	91316	7.99
Hawg Sauce (Crawfish)	91317	7.99
Hawg & Garlic (Crawfish and Garlic)	91318	7.99
Hawg & Anise (Crawfish and Anise)	91319	7.99
Coffee Shad (Coffee and Shad)	91320	7.99
Toad Magnet (Garlic and Anise)	91321	7.99
Grape Shad (Bass Sauce with Grape)	91322	7.99
Java' N Garlic (Coffee and Garlic)	91323	7.99



HD SINKING ADDITIVE

The HDS Additive is a naturally occurring silicate formulated specifically for use in making soft plastic baits sink. To achieve a similar sink rate to popular sinking baits add 1-2 tablespoons of HDS Additive per 4 oz of plastic.

Item No.	Qty.	Price
91384	1 lb	7.99
91385	5 lb	34.50
91386	10 lb	59.50



CRYSTAL CLEAR STABILIZER

A custom blend of multiple heat stabilizers to help prevent yellowing of plastic on reheats. Phthalate free.

Item No.	Qty.	Price
91387	5.5 oz	5.99
91388	1 pint	14.50



WORM OIL

Item No.	Qty.	Price
91392	5.5 oz	5.49
91393	1 pint	12.00

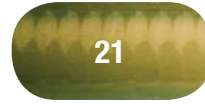
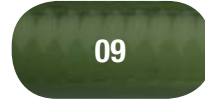
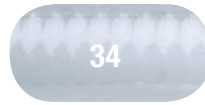
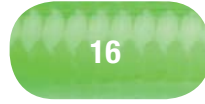
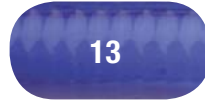


X2 COLORANT

X2 Colorants were engineered to our exact specifications. Specifically, you will find it suspends much better than most colorants, is much thicker (typically the consistency of ketchup), and is much stronger (requiring 1/3 - 1/2 as many drops as you may normally use). These are the actual colors, but you can dramatically change them by adding more or less colorant, by mixing colorants and adding glitter. 5.5 oz, 8.99 each.



	Color	Item No.
1	Amber	91262
2	Baby Bass	91263
3	Black	91264
4	Blue	91267
5	Blue Fleck #1	91265
6	Blue Fleck #2	91266
7	Brown	91268
8	Bubble Gum	91269
9	Caney Creek Green	91270
10	Chartreuse	91271
11	Cinnamon	91272
12	Emerald Green	91273
13	Florida Grape	91274
14	Fluorescent Blue	91275
15	Fluorescent Green Chartreuse	91276
16	Fluorescent Lime Green	91277
17	Fluorescent Orange	91278
18	Fluorescent Pink	91279
19	Green Grass	91280
20	Green Pumpkin Brown	91281
21	Green Pumpkin Green	91282
22	Jelly Red	91283
23	June Bug	91284
24	Midnight Blue	91285
25	Motor Oil	91286
26	Plum	91287
27	Pumpkin Seed	91288
28	Purple	91289
29	Red	91290
30	Sweet Potato	91291
31	Tomato	91292
32	Watermelon Brown	91293
33	Watermelon Green	91294
34	White	91295
35	Yellow	91296

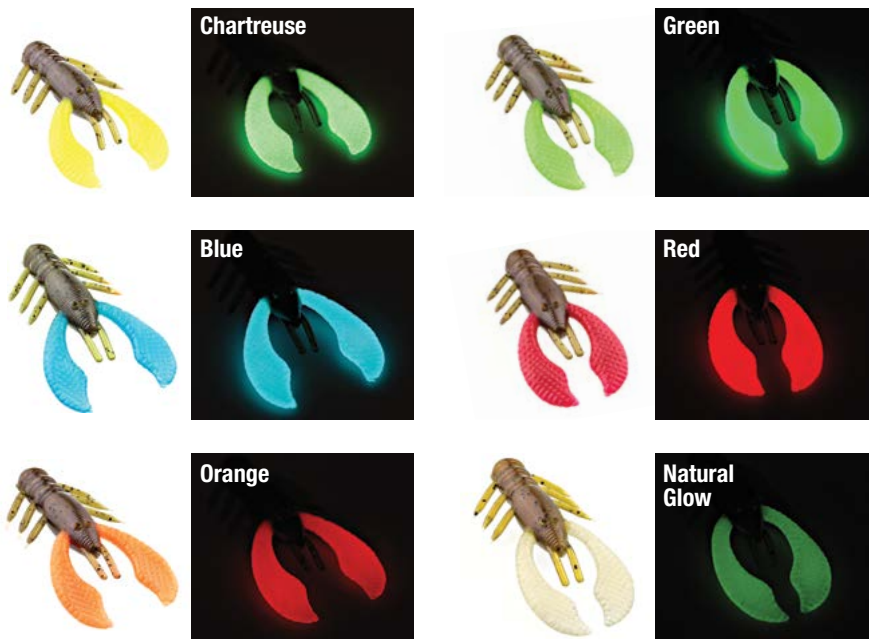


SUPER GLOW POWDER

Once charged Super Glow Powders glow their true colors up to five times brighter and twice as long as standard glow additives. This means greater attraction in deep or murky water conditions and after dark or during low light. Photo samples were made using a like colored X2 florescent colorant and 1/8 tsp. Super Glow Powder per 4-6 oz. plastic. Colors shown right.

Sold by weight (1.5 ounces) in 1 oz. container.

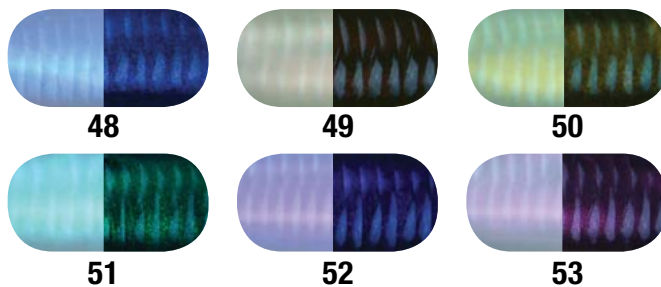
Color	Item No.	Price
Chartreuse	91255	14.00
Blue	91256	14.00
Orange	91257	14.00
Green	91258	14.00
Red	91259	14.00
Natural Glow	91260	14.00
6 pack (all colors)	91261	70.00



HYPER HI-LITES

Hyper Hi-lite powders added to your plastisol will create exciting effects. Particles reflect light creating a sense of depth and provide a sheen of color to the skin of your baits. The color intensity reflecting off the surface of the bait varies based on movement and viewing angle creating a dynamic effect in the water. Color combinations are endless. Start with a small amount the size of a match tip and add as needed. Colors are shown mixed with left in clear plastisol and right in black X2 colorant.

	Color	2 oz	5.00	4 oz	9.50	8 oz	18.99
		Item No.	Item No.	Item No.	Item No.		
48	Blue Pearl	91297		91298		91299	
49	Bronze Pearl	91300		91301		91302	
50	Gold Pearl	91303		91304		91305	
51	Green Pearl	91306		91307		91308	
52	Rose Pearl	91309		91310		91311	
53	Violet Pearl	91312		91313		91314	



HYPER HI-LITES 6 PACK

The Hyper Hi-lite six pack contains one of each of the six colors we offer in the 2 oz. size. It is a great way to try out this product! Hyper Hi-lite powders added to your plastisol will create exciting effects. See colors listed above.

Item No.	Price
91315	25.00



PEARL POWDER

Ultra Bright White Pearl Powder. A small amount of this goes a long way. Start with a very small amount, maybe equal to the tip of a match stick, and add as needed. 2 oz. jar.

Item No.	Price
91252	5.00



UV BLAST POWDER

UV BLAST is now available in a powder form for your softbaits! It will cause your bait to flash even in dark, murky water where UV light, but not visible light, penetrates. Research continues to show that fish see and are attracted to UV light. Order some UV BLAST and make 'em glow! 2 oz.

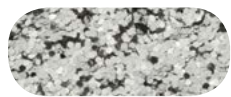
Item No.	Price
91253	9.95



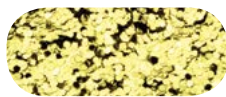
HIGH HEAT HEX GLITTER

This is the top of line polyester glitter made specifically for baits. All colors are a deep rich color and will withstand reheating. For best results, and maximum reheating, initially add the glitter once your plastic is hot. All glitter ships in a reusable plastic jar. Available in 3 sizes: .008", .015", and .040". Colors shown below.

Color #	Color Name	.008 High Heat Hex Glitter					.015 High Heat Hex Glitter					.040 High Heat Hex Glitter										
		2 oz	3.75	4 oz	5.75	8 oz	10.50	#	2 oz	3.75	4 oz	5.75	8 oz	10.50	#	2 oz	3.75	4 oz	5.75	8 oz	10.50	#
		Item No.	Item No.	Item No.	Item No.	Item No.	Item No.	Item No.	Item No.	Item No.	Item No.	Item No.	Item No.	Item No.	Item No.	Item No.	Item No.	Item No.	Item No.	Item No.	Item No.	Item No.
54	Silver	91027	91028	91029	54	91102	91103	91104	54	91177	91178	91179										
55	Gold	91030	91031	91032	55	91105	91106	91107	55	91180	91181	91182										
56	Copper	91033	91034	91035	56	91108	91109	91110	56	91183	91184	91185										
57	Garnet	91036	91037	91038	57	91111	91112	91113	57	91186	91187	91188										
58	Fire Red	91039	91040	91041	58	91114	91115	91116	58	91189	91190	91191										
59	Chartreuse	91042	91043	91044	59	91117	91118	91119	59	91192	91193	91194										
60	Sea Green	91045	91046	91047	60	91120	91121	91122	60	91195	91196	91197										
61	Lime	91048	91049	91050	61	91123	91124	91125	61	91198	91199	91200										
62	Moss Green	91051	91052	91053	62	91126	91127	91128	62	91201	91202	91203										
63	Ocean Blue	91054	91055	91056	63	91129	91130	91131	63	91204	91205	91206										
64	Ocean Spray Green	91057	91058	91059	64	91132	91133	91134	64	91207	91208	91209										
65	Navy	91060	91061	91062	65	91135	91136	91137	65	91210	91211	91212										
66	Canadian Blue	91063	91064	91065	66	91138	91139	91140	66	91213	91214	91215										
67	Light Purple	91066	91067	91068	67	91141	91142	91143	67	91216	91217	91218										
68	Purple	91069	91070	91071	68	91144	91145	91146	68	91219	91220	91221										
69	Orange	91072	91073	91074	69	91147	91148	91149	69	91222	91223	91224										
70	Perry	91075	91076	91077	70	91150	91151	91152	70	91225	91226	91227										
71	Gunmetal	91078	91079	91080	71	91153	91154	91155	71	91228	91229	91230										
72	Black	91081	91082	91083	72	91156	91157	91158	72	91231	91232	91233										
73	White	91084	91085	91086	73	91159	91160	91161	73	91234	91235	91236										
74	Holo Silver	91087	91088	91089	74	91162	91163	91164	74	91237	91238	91239										
75	Holo Gold	91090	91091	91092	75	91165	91166	91167	75	91240	91241	91242										
76	Holo Purple	91093	91094	91095	76	91168	91169	91170	76	91243	91244	91245										
77	Holo Blue	91096	91097	91098	77	91171	91172	91173	77	91246	91247	91248										
78	Holo Green	91099	91100	91101	78	91174	91175	91176	78	91249	91250	91251										



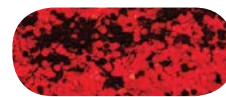
54



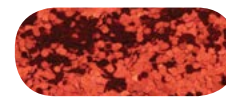
55



56



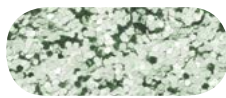
57



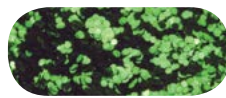
58



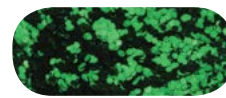
59



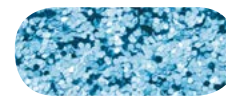
60



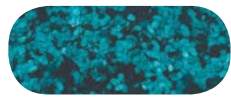
61



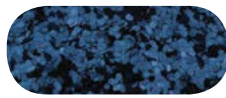
62



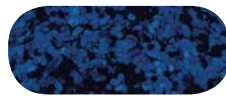
63



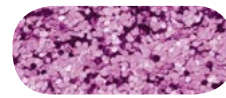
64



65



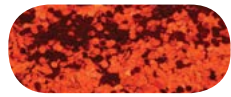
66



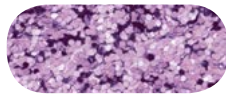
67



68



69



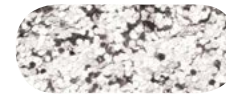
70



71



72



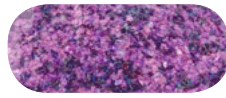
73



74



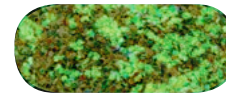
75



76



77



78

INJECTORS

The Medium Injector and Nozzle holds 1/2 cup (4oz) of plastic. Super smooth action. Please note: This injector does not use a locking pin to hold the nozzle on. Additional care and awareness should be used when using it.

Engineered to get hot quick and hold heat longer, the Large Injector holds approximately 9.5 oz of plastic (approximately 1.5 cups). It is wider and shorter than traditional injectors allowing more plastic in a shorter tube which keeps it hot longer. It also makes it less cumbersome to use.

Item No.	Model No.	Size	Price
91345	INJ0002	Medium - 4 oz	49.99
91351	INJ0009	Large - 9.5 oz	89.50



INJECTOR O-RINGS

2 O-rings. Rebuild your entire injector (2 O-rings: 1 for the injector, 1 for the nozzle).

Item No.	Model No.	Size	Qty.	Price
91347	NOZRNG2	Medium	2	1.99
91344	NOZRNL2	Large	2	2.49



MEDIUM INJECTOR NOZZLE

Medium Injector Nozzle. It's a good idea to have a couple extras as they can get hot and need time to cool between uses.

Item No.	Size	Price
91346	Medium	14.50



TUBE SPLINE

The spline is what makes the tail. The insert screws into the spline and determines how hollow the bait is. This is a spline (tail insert) for your mold.

Item No.	Model No.	Price
95208	TUBSPLN	37.50



TUBE INSERT

This is an insert for your tube / hollow body mold so you can change the thickness of the head for a tube jig or thick for a t-rig. The insert screws into the spline and determines how hollow the tube is. The spline is what makes the tail. When checking out please document in the notes what tube this is for and what type of head you want.



Item No.	Size (in inches)	Price
95200	3/4	6.99
95201	1	6.99
95202	1.25	6.99
95203	1.5	6.99
95204	1.75	6.99
95205	2	6.99
95206	2.25	6.99
95207	4	6.99
95199	Blank	6.99

PROACCURATE DIGITAL THERMOMETER

Know your plastic temperature. Stainless Steel quick read thermometer that is certified plus or minus 2 degrees up to 450 degrees. Shatterproof and waterproof. Sheath and battery included.

Item No.	Model No.	Price
91349	CDN001	18.99



GLOVES

Keep yourself safe. Always wear gloves! I use both the cotton and Nitrile almost every time I pour. The cotton are easy to slip on, the Nitrile increase your dexterity and plastic just peels off.



Item No.	Model No.	Type	Price
91343	GLVC001	Cotton Mill	5.00
91348	GLVN001	Nitrile	6.50

LAMINATED BAG

Heavy duty resealable laminated Barrier bags for artificial baits. Polyester blend to keep plasticizers and oils where they belong.

Size	Qty	Item No.	Price
4" x 4"	25	91000	4.00
4" x 4"	50	91001	7.00
4" x 4"	100	91002	10.00
6" x 4"	25	91009	4.50
6" x 4"	50	91010	7.50
6" x 4"	100	91011	14.00
7" x 4"	25	91012	5.50
7" x 4"	50	91013	9.50
7" x 4"	100	91014	18.00
8" x 4"	25	91015	5.99
8" x 4"	50	91016	9.99
8" x 4"	100	91017	18.99
10" x 4"	25	91003	6.25
10" x 4"	50	91004	10.50
10" x 4"	100	91005	20.00



POLY BAG

Heavy duty resealable Crystal Clear Polypropylene bags. Excellent viewing properties. Resists oils and grease. Perfect for jigs, weights and other small terminal tackle.

Size	Qty	Item No.	Price
2" x 3"	25	91023	3.50
2" x 3"	50	91021	6.00
2" x 3"	100	91022	11.00
4" x 4"	25	91018	4.00
4" x 4"	50	91019	7.00
4" x 4"	100	91020	10.00

FLOATING FOAM 5'

This foam is intended to add buoyancy to your baits without exposing you to glass air bubbles which can become airborne and get in your lungs. The foam is chemical resistant, soft, flexible and heat resistant. It is approximately 0.15" wide.

Item No.	Price
91342	4.95



SPRUE EXTENDER

Do-It's new 5" Sprue Extender gives large cavity molds additional hot plastic to draw from as the mold(s) cool keeping the runner full of hot plastic instead of drawing air.

Item No.	Price
91352	17.99



NEW!

YORKER CAPS

Yorker Cap and Red Lid (fits 5.5 oz and pint bottles)

Item No.	Qty	Price
91324	5	2.50



DUAL INJECTOR

Sleek, agile, and compact. Item 91340 is a complete dual injection system, that features two 4 oz capacity injectors. Retail for \$159.00. Item 91341 is a conversion kit for the folks that already have two of our 4 oz injectors. This kit contains everything you need, plus the tool, to assemble your own dual injector system. Retail for \$80.00.

Item No.	Price
91340	159.00
91341	80.00



STARTER KIT

This kit includes the most frequently requested supplies for someone just getting started. You can basically select this kit, and then purchase whatever molds you want. The only essential items not in the kit are your molds, heat source / Pyrex cup or pan, 2 Irwin bar clamps and an infrared thermometer.

The kit includes:

- (1) Gallon Regular Crystal Clear Plastisol
- 5.5 fl. oz. Worm Oil
- 5.5 fl. oz. Softener

- 5.5 fl. oz. Heat Stabilizer
- (4) Bottles X2 Colorant (Watermelon Brown, Green Pumpkin, Florida Grape, Pumpkin Seed)
- (4) 2 oz. jars of glitter (.040 Black, .008 Red, .015 Moss Green, .015 Canadian Blue)

- (1) Pair of Nitrile Gloves
- (1) Medium Injector with extra nozzle
- (25) 7x4 Bait Bags

Item No.	Price
91359	200.00

MOLD KITS

Each kit includes: Medium Plastic Injector, Pint of Crystal Clear Plastic, two 5 oz. containers of plastic colorant, two 2 oz. containers of glitter, nitrile gloves, and an Aluminum Injection Mold or an Aluminum Open Pour Mold of the bait listed and shown below.

Colors may differ than those shown right.



INJECTION CRAPPIE KIT

This kit includes materials to create a 2.5" Crappie Carrot

Item No.	Price
91353	139.99



Crappie Carrot

INJECTION CRAW KIT

This kit includes materials to create a 3.75" Mud Bug

Item No.	Price
91354	129.99



Mud Bug

INJECTION CREATURE KIT

This kit includes materials to create a 4" Lil' Toad Sticker

Item No.	Price
91355	134.50



Lil' Toad Sticker

INJECTION CROAKER KIT

This kit includes materials to create a 3.5" Croaker

Item No.	Price
91356	129.99



Croaker

INJECTION WACKY KIT

This kit includes materials to create a 6" Skinny Carrot

Item No.	Price
91357	125.50



Skinny Carrot

OPEN POUR KIT

This kit includes materials to create a 4.85" Freedom Fry

Item No.	Price
91358	69.99



Freedom Fry

INTRODUCING DO-IT SOFT BAITS ESSENTIAL SERIES

Custom making your own soft bait lures is one of the most exciting things in angling. Do-it's new Essential Series focuses on providing the tackle enthusiast all the "essential" products used to enter into the world making their own soft bait lures. The products are designed to be a great value and something that any fisherman can utilize to begin creating their own custom baits.



The Essential Series Molds are value engineered, giving the enthusiast a lower price point product, but still retain all the bait's effective fish catching power. Our plastisol is easy to use, does not contain harmful phalates and out performs other products on the market. Our colorant and glitter for the Essential Series is engineered to be user friendly, cost effective and gives the customer amazing creative ability.

ESSENTIALS STARTER KIT

All the "essential" accessories needed to get started shooting your own plastics in one easy starter kit.

The kit includes:

- (1) Quart Essential Series Plastisol
- (4) Bottles Essential Series Colorant (Watermelon Green, Chartreuse, June Bug, Motor Oil)
- (2) Bottles Essential Series Glitter (.015 Holographic Silver and .015 Fire Red)
- (1) Medium Injector with extra nozzle
- (25) 7x4 Bait Bags



Item No.	Price
91360	78.00

BEAVER STYLE BUG

The king of flipping and punching baits, this classic beaver style bait will break through the cover and seduce the most finicky of fish. A classic presentation employed by many a tournament angler to fill the live well.

Item No.	Model No.	Mold Type	Size (in inches)	Cavities	Price
96009	BBG-1-45	Creature	4.5	1	40.00



BRUSH HOG

This is a great flipping or pitching bait. Large flappers, twin c-tails and a partially ringed body all add to this baits fish attracting simplicity.

Item No.	Model No.	Mold Type	Size (in inches)	Cavities	Price
96004	BH-1-525	Creature	5.25	1	40.00



CRAW

This is an "action" craw. It provides a realistic profile when pitching, however, the claws have a super flapping action on retrieve. It will get their attention one way or the other.

Item No.	Model No.	Mold Type	Size (in inches)	Cavities	Price
96006	MDC-1-35	Craw	3.5	1	40.00



CREATURE CRAW CHUNK

Every boat needs a good trailer and jigs are no different. The Creature Craw Chunk is an excellent trailer to quickly beef up a jig to slow its fall and give it added attraction. The meaty body easily slides up the hook shank of your favorite jigs and can be shortened as needed while the ribbed craw pincers give it an erratic unique action. Pour it up in a craw color or match your favorite skirt. The Creature Craw Chunk allows you to build it right and get the bite.

Item No.	Model No.	Mold Type	Size (in inches)	Cavities	Price
96013	CCC-4-325	Craw	3.25	4	40.00



FINESSE CRAWLER

This worm defines finesse. Subtle and delicate, it's an outstanding performer on a split shot rig or shakey head. Its bulbous tipped tail has one flat side and simply can't be still with even the slightest movement of the rod tip.

Item No.	Model No.	Mold Type	Size (in inches)	Cavities	Price
96001	FSC-5-60	Worm	6	5	40.00



FROG

An extremely realistic frog imitation, toss this Swim Frog in or around the grass or Lillie pads and hang on. It has a stellar top water action but excels as a subsurface swimmer as well. Just put this bait in their "froggie zone" they're going to pound it.

Item No.	Model No.	Mold Type	Size (in inches)	Cavities	Price
96002	BFS-2-35	Frog	3.5	2	40.00



GRUB

It is theoretically possible that the 3" twisty tail grub has caught more fish than any other plastic bait. Imitating a small forage fish it's the perfect size with an action that is irresistible. Now you can make your own 3" grubs in the colors that entice the fish on your local waters.

Item No.	Model No.	Mold Type	Size (in inches)	Cavities	Price
96010	KCG-4-3	Grub	3	4	40.00



JERK BAIT

The tail on this jerk bait has an incredibly subtle action that is sure to trigger strikes, and not unlike most soft jerk baits with this profile, it casts like a dart and has a very erratic action when twitched on the retrieve. Carolina Rig, Texas Rig, Drop Shot, Donkey Rig, just about anything goes with this bait.

Item No.	Model No.	Mold Type	Size (in inches)	Cavities	Price
96000	WJB-4-50	Jerk Bait	5	4	40.00



LIZARD

The Lizard is specifically designed to entice Spring and Fall feeding patterns, as well as trigger defensive instincts. The King of the Carolina Rig and Spring bed fishing everyone's arsenal needs a Lizard to help bring in the early and late season fish.

Item No.	Model No.	Mold Type	Size (in inches)	Cavities	Price
96003	LZ-1-7	Creature	7	1	40.00



SENKO

As we have done in the past we have teamed up with Gary Yamamoto and he has given us license to manufacture a do it yourself mold to create a bait with the very same specifications as his legendary Senko, one of the most popular soft plastic baits in history. From bow to transom and every little rib in between it is to exact specifications.

Item No.	Model No.	Mold Type	Size (in inches)	Cavities	Price
96019	GYS-4-40	Worm	4	4	40.00
96005	GYS-4-50	Worm	5	4	40.00
96020	GYS-4-60	Worm	6	4	40.00



NEW SIZES!

SWIMBAIT

Sporting a natural swimming action, that will be sure to attract bites from hesitant bass, this bait rocks gently back and forth as its tail dances from side to side. Fish it alone Texas Rigged, on an underspin jig, or group them together on an umbrella style rig, it is a realistic and versatile swimmer.

Item No.	Model No.	Mold Type	Size (in inches)	Cavities	Price
96007	SSB-3-375	Swimbait	3.75	3	40.00



RIBBON WORM

A staple of Bass Fishing for many years the Ribbon Worm delivers an excellent swimming action thanks to its specially designed tail. Wider at its base, this prevents it from wrapping around grass and stick ups, keeping you and the bait free to make a few more casts.

Item No.	Model No.	Mold Type	Size (in inches)	Cavities	Price
96008	RTW-2-7	Worm	7	2	40.00



PADDLE TAIL

You can hardly round out your tackle box or lure collection without including the Paddle Tail. It has been a staple of many people's presentations for years and it is here to stay. Now you can make your very own custom Paddle Tails in all of your favorite color combinations. They excel on a jig and do a great job of imitating a prey fish. Poured up in the right color they can mimic almost any bait fish in the system. These baits are the perfect size for a multitude of species making these a versatile all around bait meant for every fisherman's tackle box!

Item No.	Model No.	Mold Type	Size (in inches)	Cavities	Price
96014	PT-12-175	Swimbait	1.75	12	40.00
96015	PT-8-200	Swimbait	2	8	40.00
96011	PT-6-225	Swimbait	2.25	6	40.00
96016	PT-3-350	Swimbait	3.5	3	40.00
96017	PT-2-400	Swimbait	4	2	40.00
96018	PT-2-500	Swimbait	5	2	40.00

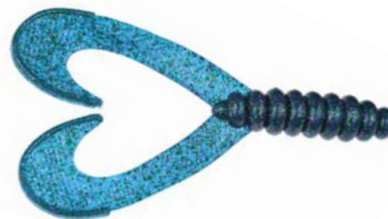
NEW SIZES!



TWO-PENNY TWINTAIL GRUB

The Twintail grub may be responsible for more walleye dinners than any other plastic out there. We improved upon this age old bait by segmenting and bulking up the body while ribbing and thinning down the tail to maximize action. These tails move! Not to mention, it serves as a great jig trailer for bass fishermen. The Two Penny Twintail comes in 4" length but can easily be shortened to custom fit a jig. Let the fish give you their two cents worth while you give them a mouthful of the Two Penny Twintail.

Item No.	Model No.	Mold Type	Size (in inches)	Cavities	Price
96012	TPT-2-40	Grub	4	2	40.00



ESSENTIAL SERIES PLASTISOL

Making your own custom soft plastic baits has never been easier with Do-Its' line of Essential Series Plastisol. Simply heat up 4-8 oz. of plastisol in a microwave to 350 degrees adding color and glitter as desired and inject into your mold(s). You'll be making your own custom colored plastic baits with ease and peace of mind knowing you are using the best quality plastic on the market. The Essential Series Plastisol comes in a liquid form and upon heating turns clear and hardens into plastic upon returning to room temperature once injected. The Essential Series Plastisol line is user friendly and perfect for those just getting into making their own baits. Set up time takes only 30-60 seconds upon injecting into a mold. For best results let baits cure after pulling them out of the mold for 24 hours before bagging packaging or fishing them.

Qty.	Item No.	Price
1 Pint	91460	7.99
1 Quart	91461	14.99
1 Gallon	91462	45.99
2.5 Gallon	91370	78.50
5 Gallon Bucket	91371	135.00*
55 Gallon Drum	91372	1150.00*

*Freight needs to be calculated



ESSENTIAL SERIES COLORANT

Make your own soft plastic baits in the colors you want. A few drops of Essential Series Colorant added to your plastisol before pouring is all you'll need to create that perfect fish catching color you're looking for. Add more for a darker more opaque appearance or less for that translucent look. Either way, you're in control.

1 oz, \$4.75 each

	Color	Item No.
1	White	91400
2	Chartreuse	91401
3	Black	91402
4	Motor Oil	91403
5	Red	91404
6	Watermelon Green	91405
7	Blue	91406
8	Pumpkin Brown	91407
9	Junebug	91408
10	Midnight Blue	91409
11	Blue Smoke	91410
12	Pearl	91411
13	Purple Smoke	91412
14	Flo. Orange	91413
15	Green Smoke	91414
16	Flo. Pink	91415

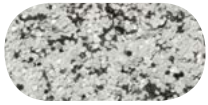


ESSENTIAL SERIES GLITTER

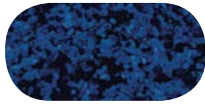
Bring the "bling" to your own custom made soft plastic baits. A high quality polyester glitter, the Essential Series Glitter suspends in plastic better than heavier glitters and was made specifically for plastic baits. Give your soft baits that professional, eye popping appeal that catches fish, for best results, add glitter to hot plastic just before pouring or injecting. Glitter Flake comes in .015 size.

1 oz, \$3.50 each.

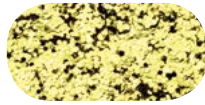
	Color	Item No.
1	Silver	91430
2	Canadian Blue	91431
3	Gold	91432
4	Fire Red	91433
5	Black	91434
6	Chartreuse	91435
7	White	91436
8	Purple	91437
9	Moss Green	91438
10	Copper	91439
11	Orange	91440
12	Gun Metal	91441



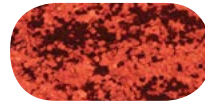
01



02



03



04



05



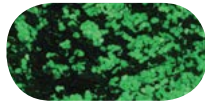
06



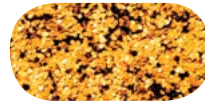
07



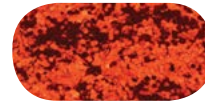
08



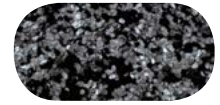
09



10



11



12

2016*2017
CUSTOM MADE
 —TOURNAMENT GRADE—

